

BELDS Approach & ECE Accelerator Toolkit



GPE KIX
KNOWLEDGE INNOVATION EXCHANGE

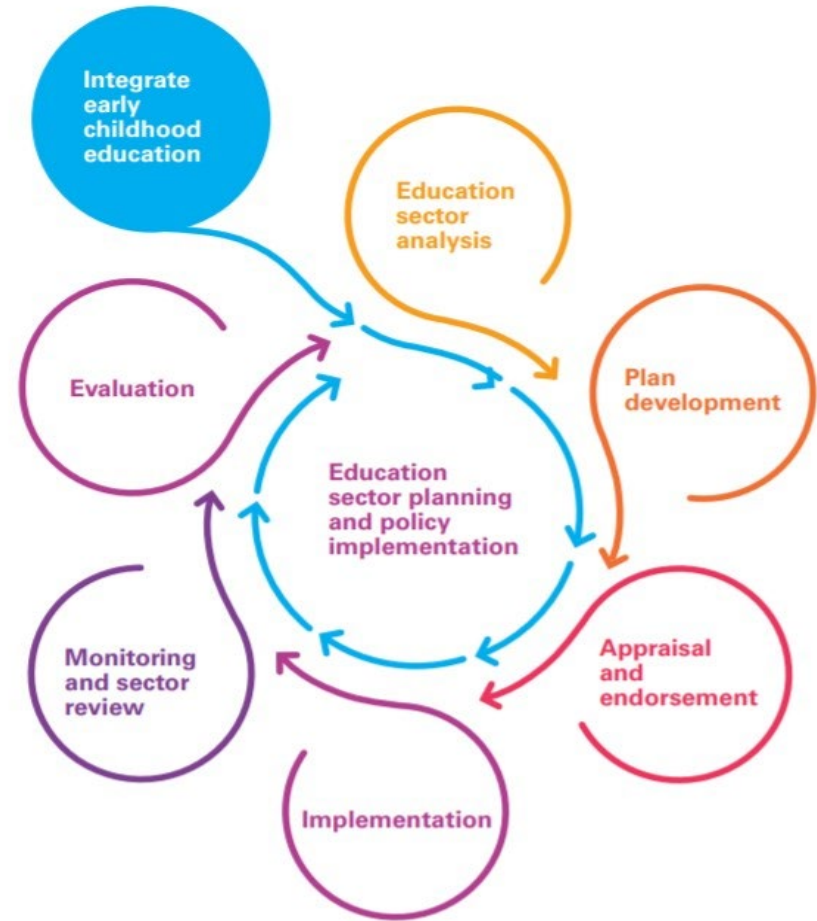
unicef 

Better Early Learning And Development at Scale (BELDS)

Strengthening ECE through Education Sector Planning processes

The BELDS approach aims to:

1. **Integrate ECE** systematically into ESP processes
2. **Build capacity** of national education systems to effectively plan for and implement ECE programs
3. Promote **knowledge exchange** and peer learning



KIX Project – Scaling up the Approach

Overall Objective: Scale up and expand the approach, refine and expand the ECE Accelerator Toolkit to enable GPE members countries to plan for the implementation quality ECE at Scale through ingoing education sector planning and implementation

1. Engage with a new cohort of countries (Sierra Leone, South Sudan, Tajikistan) to strengthen and enhance the approach and toolkit
2. Continue to engage with 2 original pilot countries (Kyrgyzstan, Lesotho) through ESP implementation, ESP monitoring, sector review and evaluation
3. Identify context-based innovation levers for optimal scaling of the approach and tool through qualitative research involving stakeholders and the central and local levels
4. Amplify knowledge exchange across the project countries and with other countries to foster and community of practice
5. Generate global goods, produce and disseminate the knowledge required to scale up the ECE accelerator toolkit and approach



Kyrgyzstan
Tajikistan

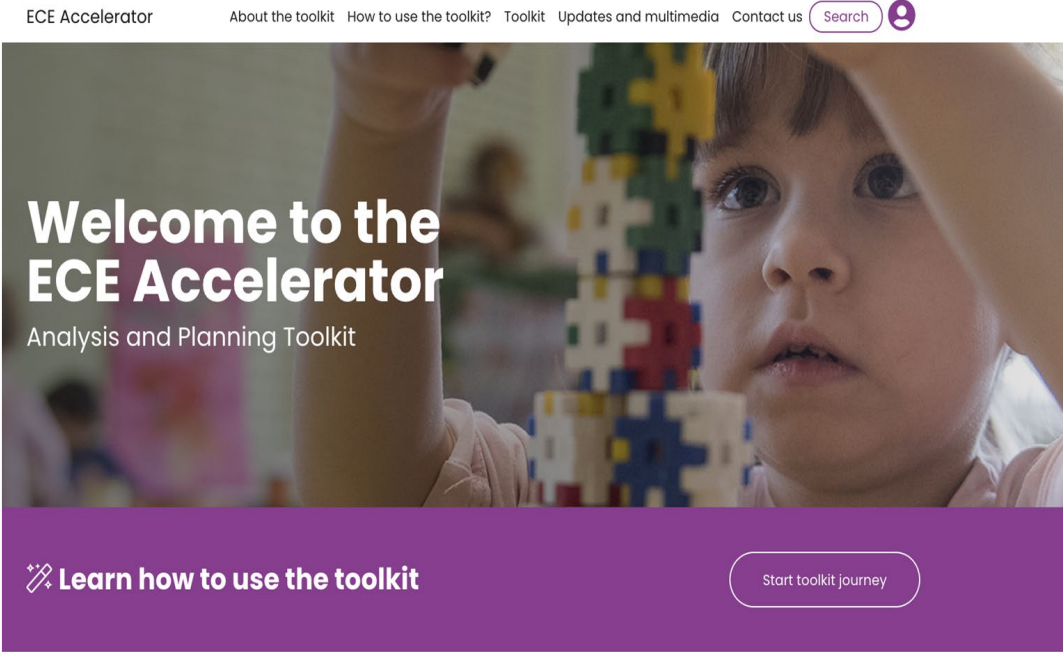
KIX BELDS COMMUNITY OF PRACTICE

- ❖ **Community of practice is a key aspect of the KIX project – promote knowledge exchange and learning**
 - Strengthening ECE in ESP processes (better analysis, planning, implementation, M&E of ECE)
 - Use of ECE Accelerator Toolkit

- ❖ **COP's knowledge exchange and learning will contribute lessons learned and experiences among members and with other countries**

What is the ECE Accelerator Toolkit?

- Global e-toolkit with practical resources to support the inclusion and strengthening of ECE in ESP processes
- Assumptions prior to use:
 - Countries may be at varying “starting points”
 - Countries have some level of ECE political will and commitment



The screenshot shows the homepage of the ECE Accelerator Toolkit. At the top, there is a navigation bar with links for 'ECE Accelerator', 'About the toolkit', 'How to use the toolkit?', 'Toolkit', 'Updates and multimedia', and 'Contact us'. A search bar and a user profile icon are also present. The main content area features a large image of a child playing with colorful blocks. Overlaid on this image is the text 'Welcome to the ECE Accelerator' in a large, bold font, followed by 'Analysis and Planning Toolkit' in a smaller font. Below the image, there is a purple banner with a white icon of a pencil and paper, followed by the text 'Learn how to use the toolkit'. To the right of this banner is a white button with the text 'Start toolkit journey'. At the bottom of the page, the text 'Strengthening Early Childhood Education in Education Sector Planning Processes' is displayed in a bold, black font.

ECE Accelerator About the toolkit How to use the toolkit? Toolkit Updates and multimedia Contact us Search 

Welcome to the ECE Accelerator

Analysis and Planning Toolkit

 [Learn how to use the toolkit](#)

[Start toolkit journey](#)

Strengthening Early Childhood Education in Education Sector Planning Processes

Objectives & Target Audience



Toolkit Objectives:

- Support countries in consultatively developing and mainstreaming evidence-based **ECE subsector plans** into the broader education sector plans and budgets; and
- Build capacity in basic **ECE data analysis, prioritization, planning, and costing** for enhanced overall subsector development.



Target Audience:

1. **ECE Actors** (government stakeholders, development partners, LEG, civil society, etc.)
1. **Planning, Policy, Financing, and Management Stakeholders**
1. **Any other organizations that accompany and provide technical assistance to governments**

What makes the toolkit unique



The toolkit is not prescriptive

Tools suggest priority indicators, criteria, and considerations, all with examples



The toolkit is not made up of initial conceptual guidance documents

Tools build on the *Build to Last Conceptual Framework*, MOOC on mainstreaming ECE into ESP, and Guidelines for Education Sector Plan Preparation, Methodological Guidelines for Education Sector Analysis



No strict terms or pre-conditions required



No external funding or facilitators required

Toolkit features



Toolkit Journey



1. The toolkit follows the “**journey**” (key milestones or related actions that are common across countries) that countries go through in the context of sector planning and systems strengthening efforts.



1. These tools support an **iterative process** - the process of revisiting and repeating steps and actions as needed - with some tools helping you with more than one step and action in this “journey”.

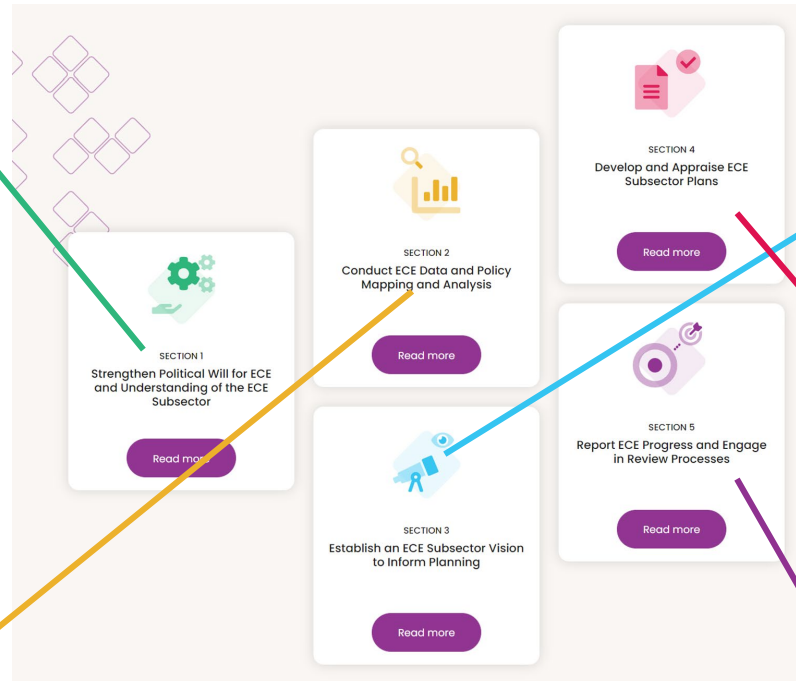
Overview of the five sections

Section 1:

- Understand the key features of an effective ECE subsector
- Conduct ECE advocacy efforts
- Set up or invigorate an ECE technical working group
- Clarify the ECE space in your context

Section 2:

- Identify, consolidate, and assess available ECE data and information
- Identify ECE data gaps and consider ECE evidence generation plans
- Conduct a comprehensive analysis of the ECE subsector
- Formulate the ECE sections or chapter of the ESA report



Section 3:

- Formulate ECE strategies, activities, etc
- Understand how to estimate costs of the ECE strategies and activities


Section 4:

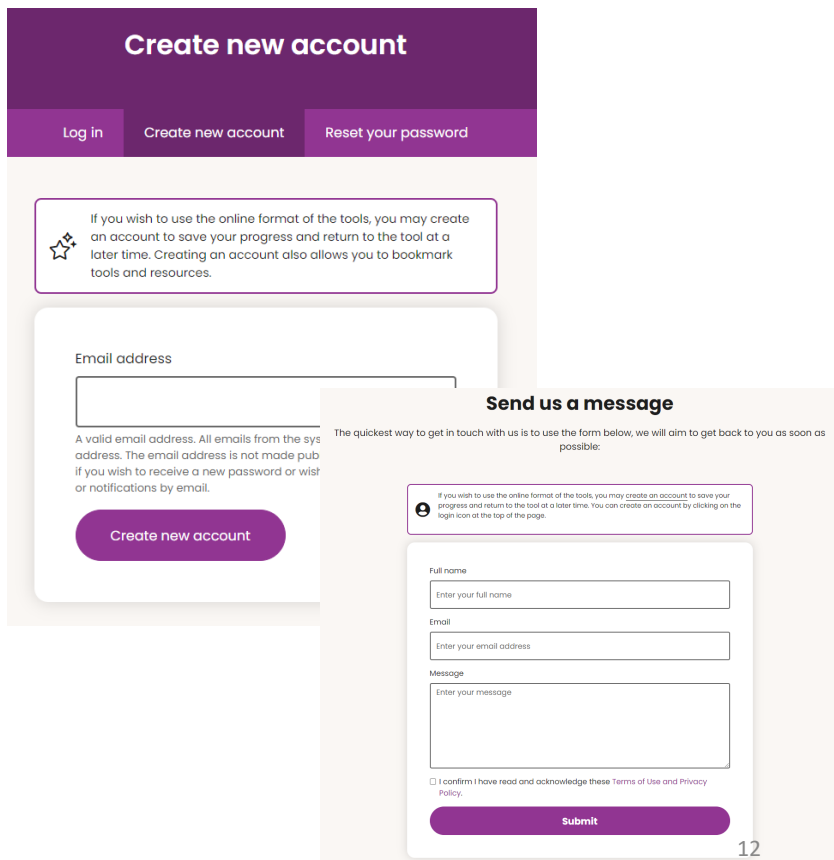
- Revisit ECE components of an operational/action plan
- Check for consistency, coherence, and feasibility of ECE components of operational plans

Section 5:

- Review and report consolidated, annual ECE data

Additional Features

1. You can download the tools for offline use (to contextualize, adapt, translate, etc.) OR work on them directly online  you can create an account
2. Use the “[Contact Us](#)” page to reach us.



The image shows two overlapping screenshots of a website interface. The top screenshot is titled "Create new account" and features a purple header with the title and three navigation buttons: "Log in", "Create new account", and "Reset your password". Below the header is a light purple box with a star icon and text: "If you wish to use the online format of the tools, you may create an account to save your progress and return to the tool at a later time. Creating an account also allows you to bookmark tools and resources." Below this is a white form with an "Email address" label and a text input field. A note below the field states: "A valid email address. All emails from the sys address. The email address is not made pub if you wish to receive a new password or wist or notifications by email." At the bottom of the form is a purple "Create new account" button.

The bottom screenshot is titled "Send us a message" and features a light purple header with the title. Below the header is a light purple box with an envelope icon and text: "The quickest way to get in touch with us is to use the form below, we will aim to get back to you as soon as possible." Below this is a white form with a "Full name" label and an input field, an "Email" label and an input field, and a "Message" label with a large text area. At the bottom of the form is a checkbox labeled "I confirm I have read and acknowledge these Terms of Use and Privacy Policy." and a purple "Submit" button.

Questions & Reflections

